

**Paper Reference(s) 1BI0/2H**  
**Pearson Edexcel Level 1/Level 2 GCSE**  
**(9–1)**

**Biology**  
**PAPER 2**  
**Higher Tier**

**Diagram Booklet**

**V69321A**

# INSTRUCTIONS

**THIS DIAGRAM BOOKLET MUST NOT  
BE RETURNED WITH THE QUESTION  
PAPER AT THE END OF THE  
EXAMINATION.**

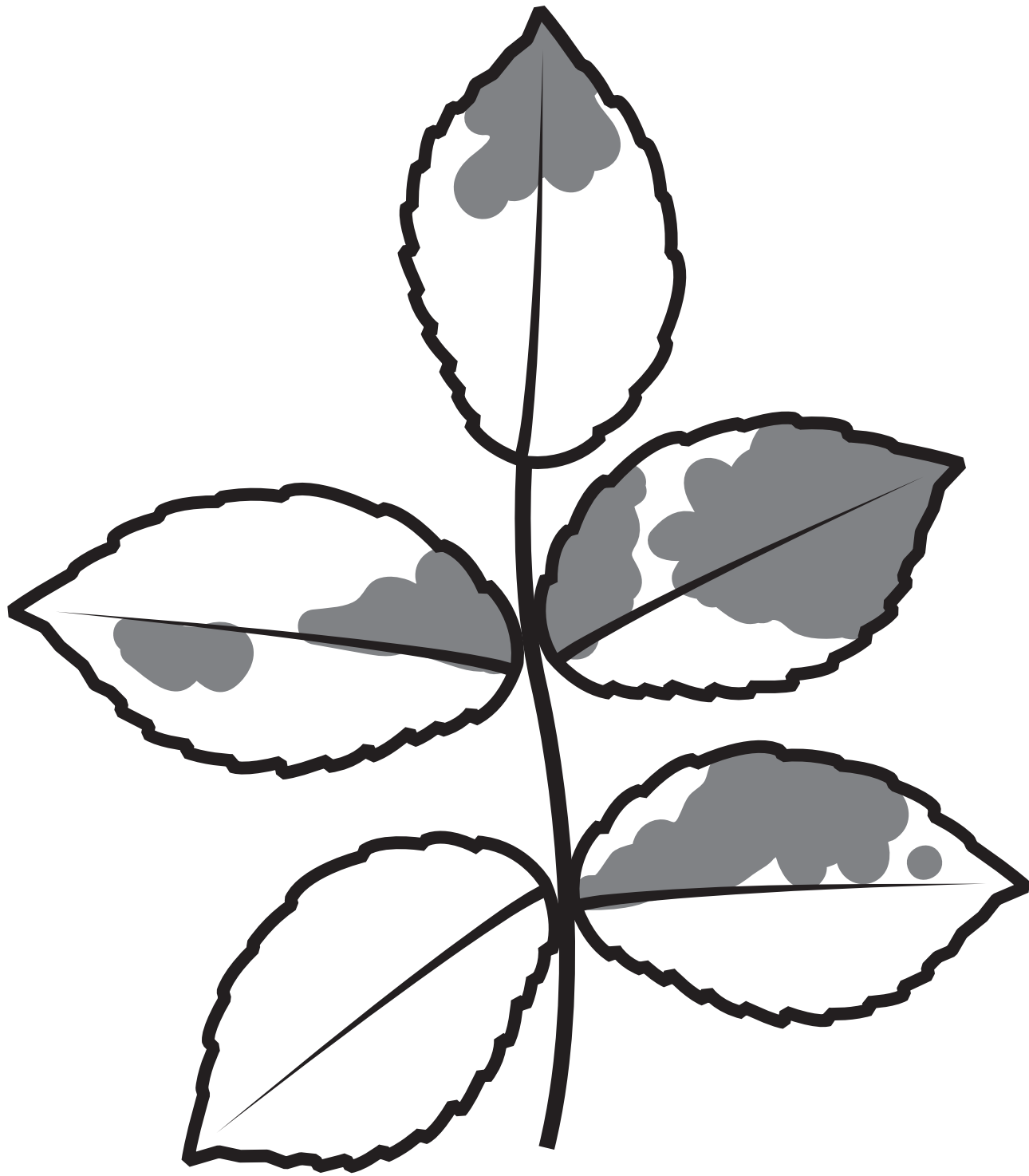
# Contents

## Page

4	Question 1(b)
5	Question 2(a)
6	Question 2(b)
7	Question 3(a)
8	Question 4(a)
9	Question 4(b)
10	Question 4(c)(ii)
11	Question 5(b)
12	Question 6(c)
13	Question 7(a)
14	Question 8(a)(iii)
15	Question 9(a)
16	Question 10(b)(ii)

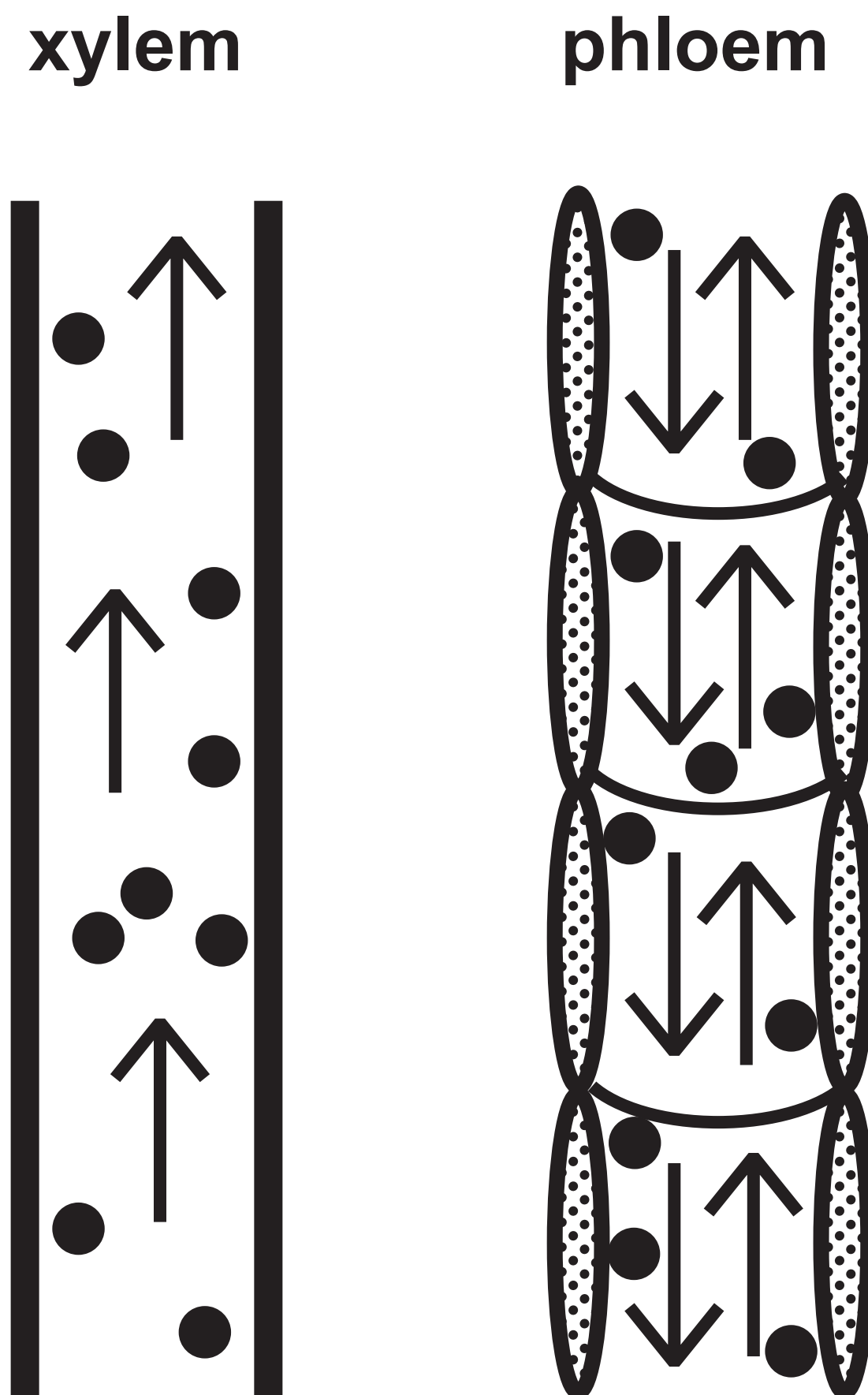
# Question 1(b)

**FIGURE 1**



## Question 2(a)

FIGURE 2



## Question 2(b)

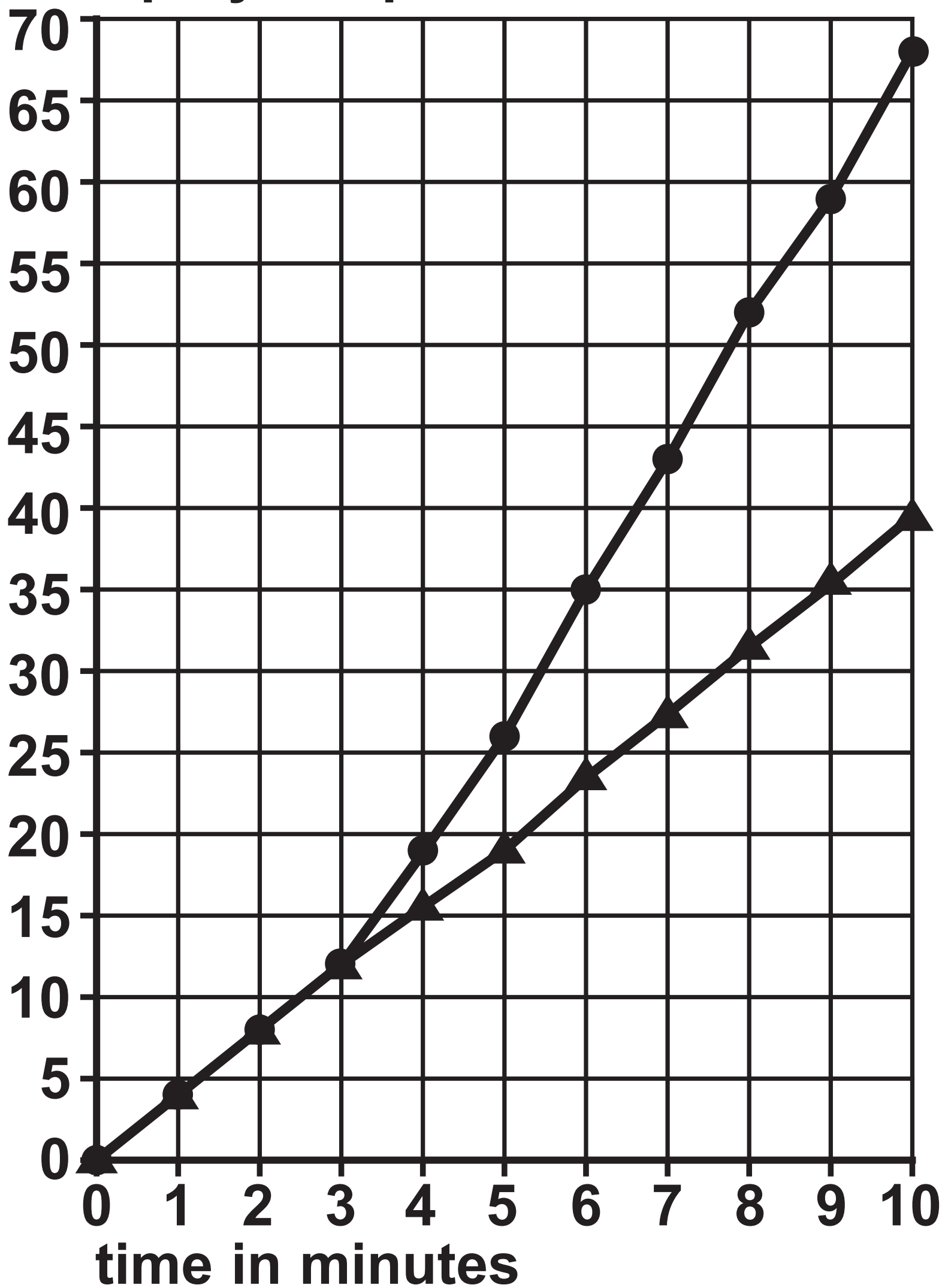
FIGURE 3

—●— fan switched on after three minutes

—▲— fan not switched on

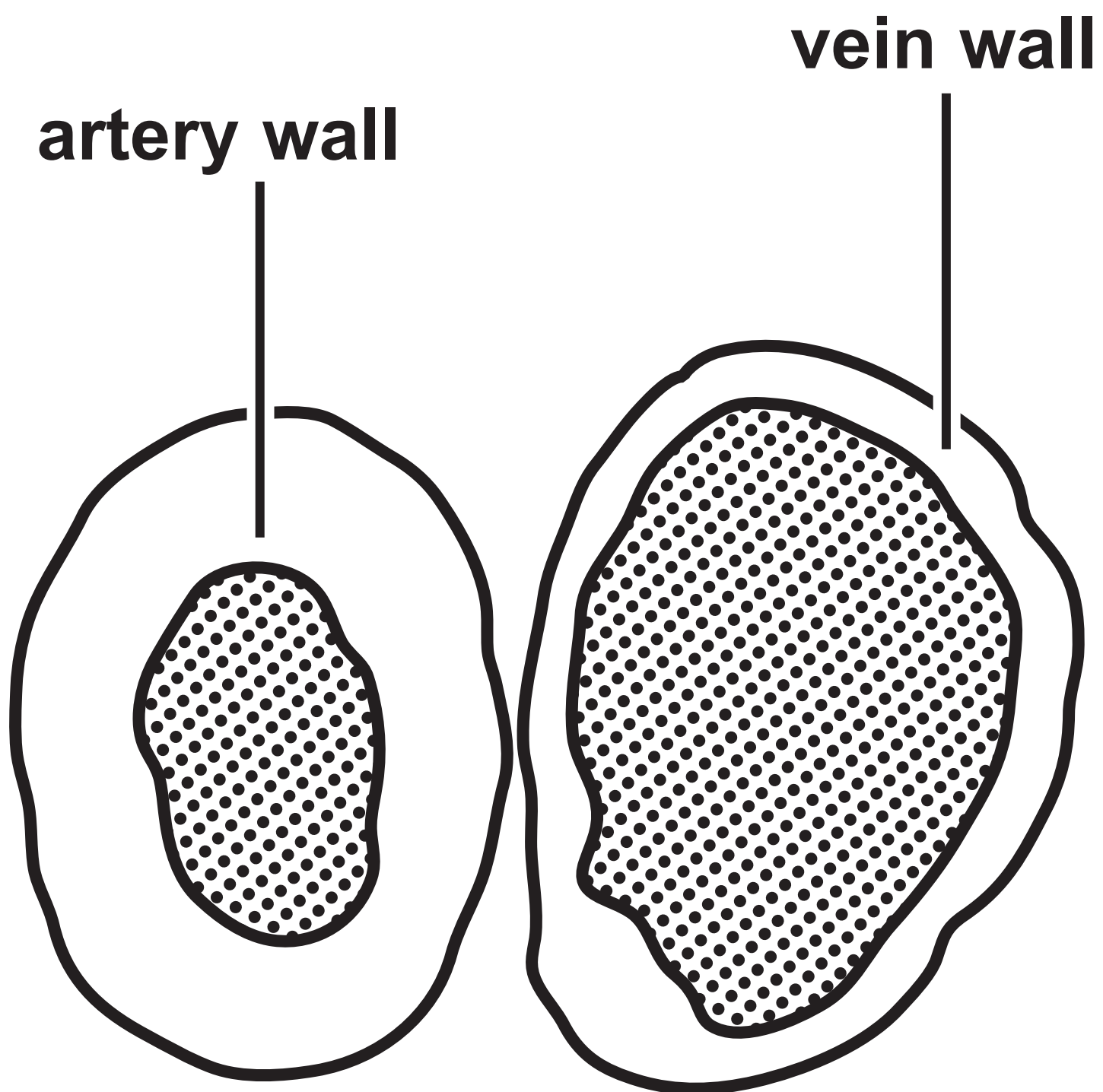
volume of water

taken up by the plant in  $\text{mm}^3$



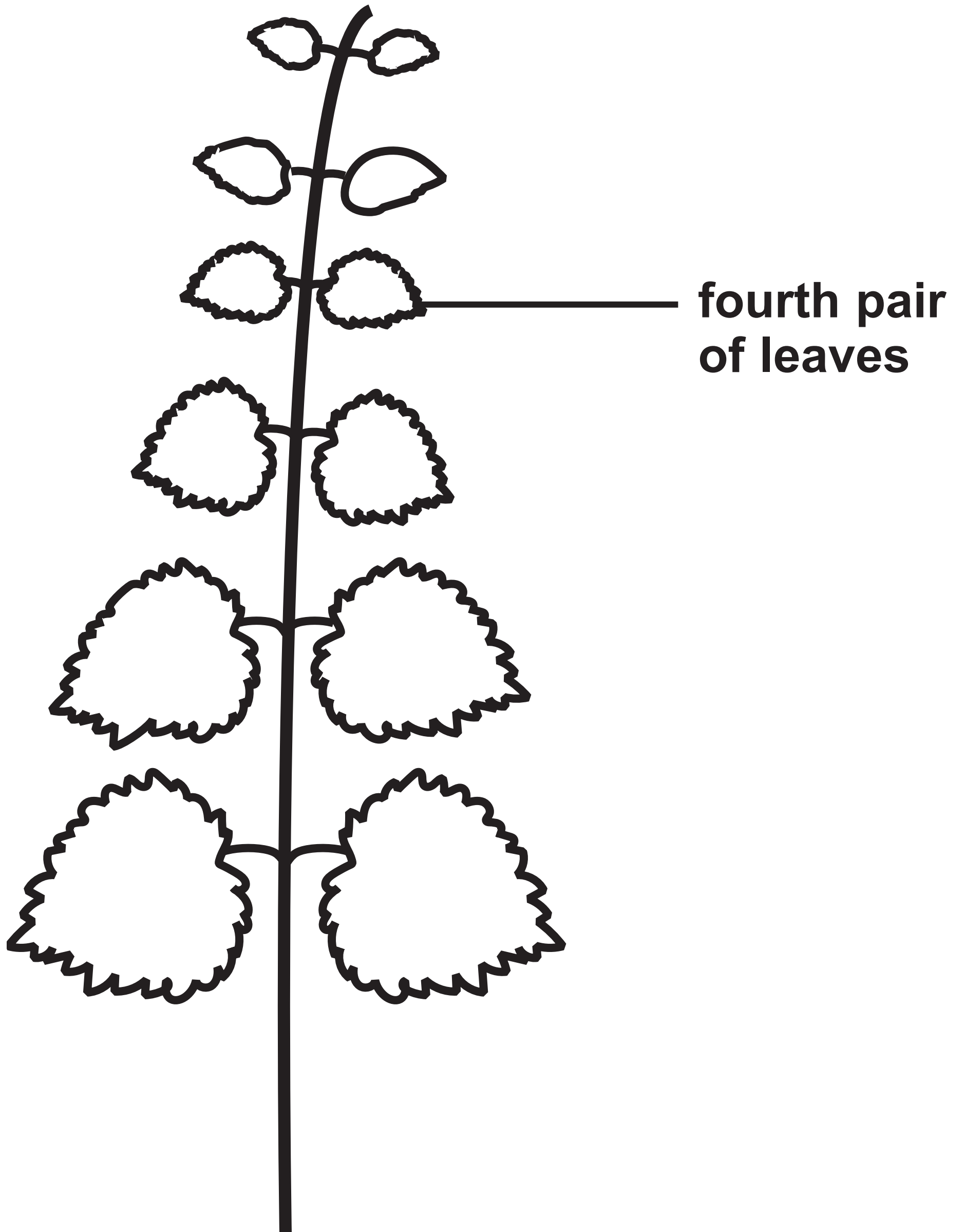
## Question 3(a)

FIGURE 4



## Question 4(a)

FIGURE 5





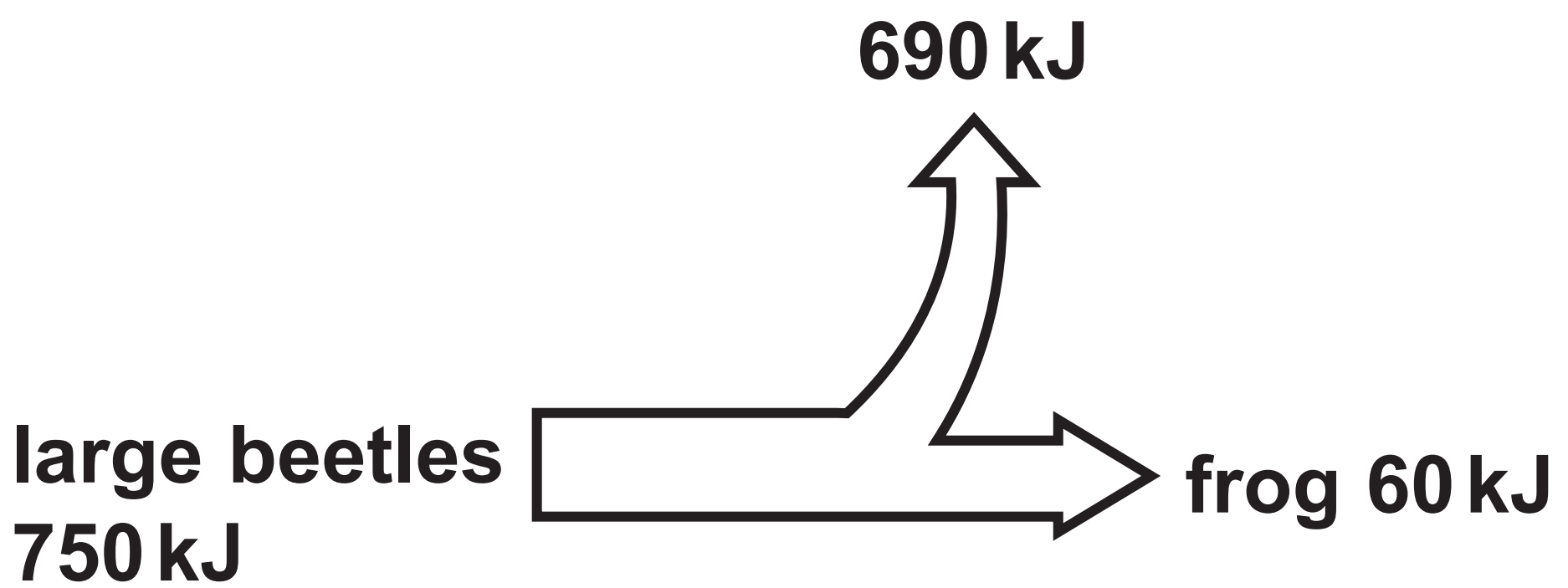
## Question 4(b)

FIGURE 6

nettle plant	width of the leaf in millimetres (mm)	
	area A (in shade)	area B (in sunlight)
1	45	33
2	50	25
3	48	27
4	52	48
5	47	28
mean	48	28

## Question 4(c)(ii)

FIGURE 7



Question 5(b)

FIGURE 9

dead animals and plants  $\xrightarrow{\text{X}}$  ammonia  $\xrightarrow{\text{Y}}$  nitrates

Question 6(c)

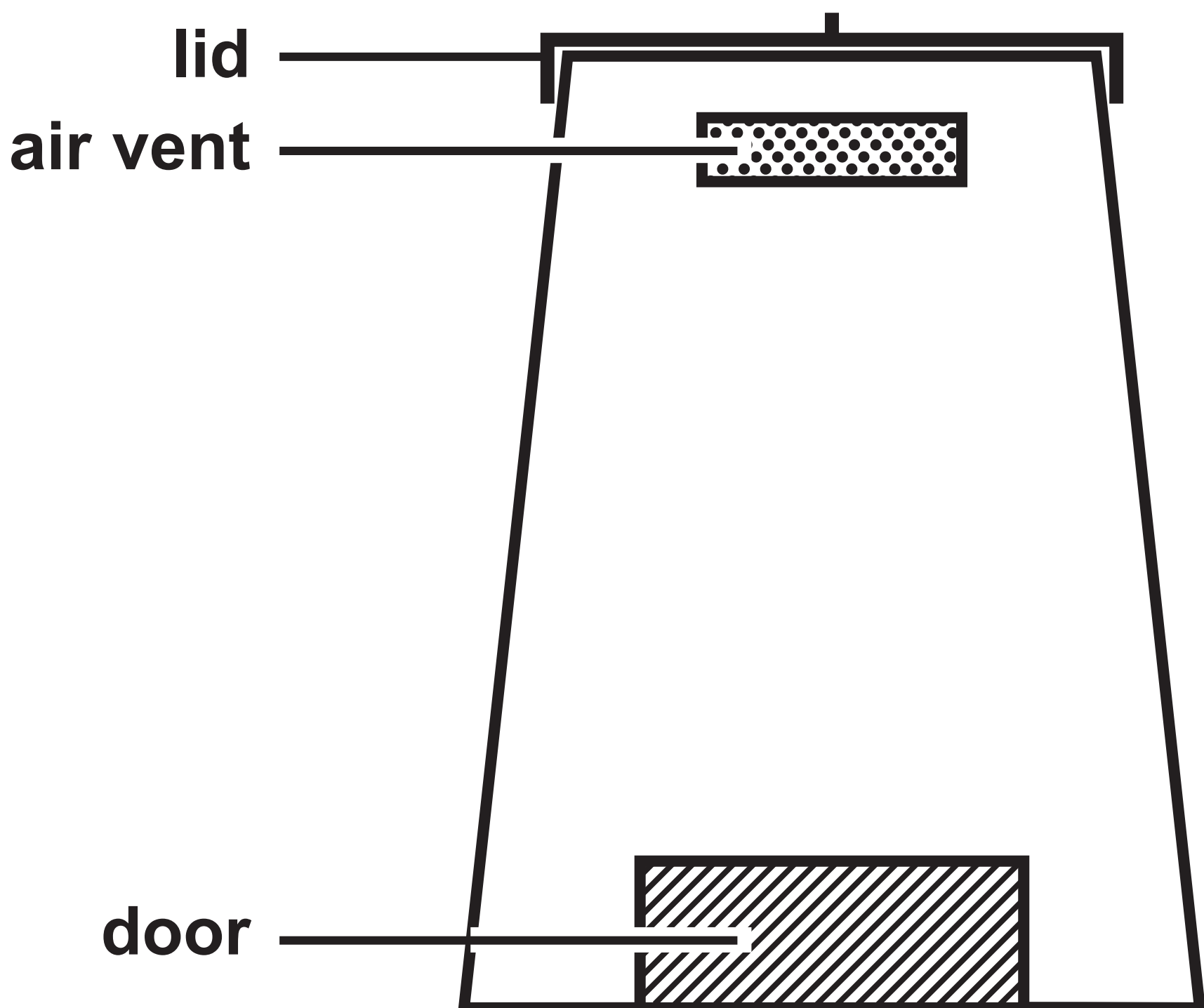
FIGURE 10

blood test	woman's result	normal range
TSH level	5.6 mU/l	0.4 to 4.9 mU/l
thyroxine level	27.5 pmol/l	9.0 to 21.0 pmol/l
red blood cell count	$5.2 \times 10^6$ cells/ $\mu$ l	$4.2$ to $5.4 \times 10^6$ cells/ $\mu$ l
glucose level	82.0 mg/dl	72.0 to 99.0 mg/dl

## Question 7(a)

FIGURE 11

- add soil in between layers of vegetation
- mix the contents of the compost bin once a month to add air
- keep the lid on to prevent water entering



Question 8(a)(iii)

FIGURE 13

type of exercise	heart rate in bpm				
	0 minutes	5 minutes	10 minutes	15 minutes	20 minutes
running	90	156	168	180	180
walking	90	96	90	96	90

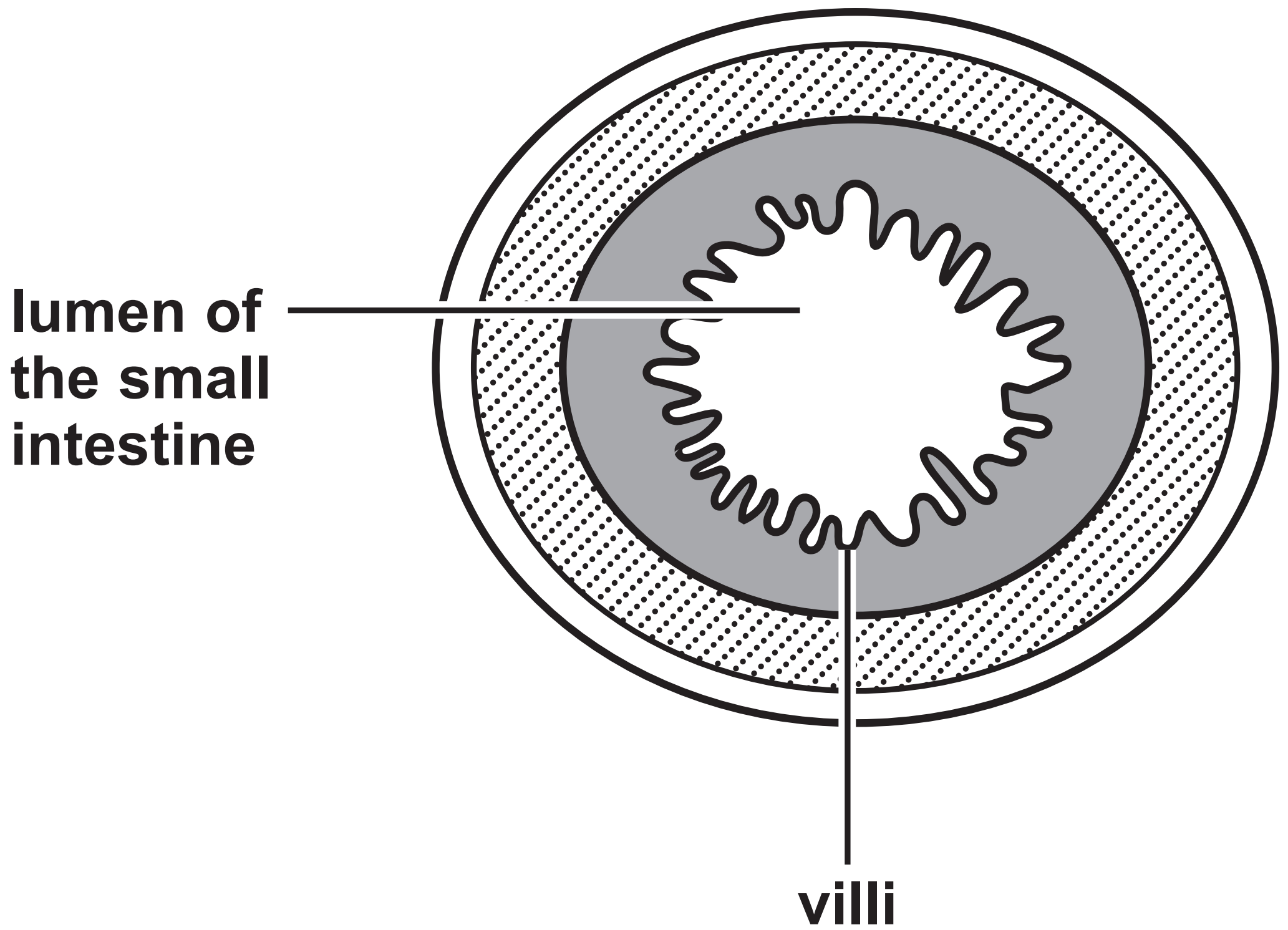
## Question 9(a)

FIGURE 14

<b>month</b>	<b>March</b>	<b>July</b>
<b>number marked in the first sample</b>	<b>18</b>	<b>12</b>
<b>size of the second sample</b>	<b>22</b>	<b>18</b>
<b>number of recaptured animals</b>	<b>8</b>	<b>10</b>
<b>population size</b>	<b>50</b>	

## Question 10(b)(ii)

FIGURE 15





**Question 1(b)**

**(Source adapted from: © Manfred Ruckszio/Shutterstock)**

**Question 3(a)**

**(Source adapted from: © The University of Kansas Medical Center)**

**Question 4**

**(Source adapted from: © Alila Medical Media/Shutterstock)**

**Question 5(a)**

**(Source adapted from: © Nigel Downer/Science Photo Library)**

**Question 10(b)(ii)**

**(Source adapted from: © Science Photo Library C047/6177)**